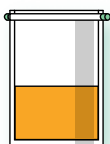


# General extraction protocol

Sample

25 g or 25 ml



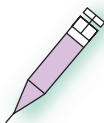
25 ml  
extraction  
buffer

15 min / 18-25°C



Centrifugation  
15 min at 3000-5000 g  
18-25°C

Supernatant



Syringe containing  
a plug of  
absorbent cotton

Adjust pH  
between 7.5 and 8.0  
using 1N NaOH

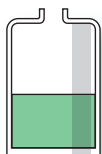
500 µl



**VIDAS® SET2**  
Results within 80 min

# Liquid food

Sample



Concentrated food : dilute as indicated by manufacturer

Adjust pH between 7.5 and 8.0 using 1N NaOH

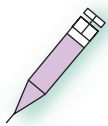


If precipitate



Centrifugation  
15 min at 3000-5000 g  
18-25°C

Supernatant



Syringe containing a plug of absorbent cotton



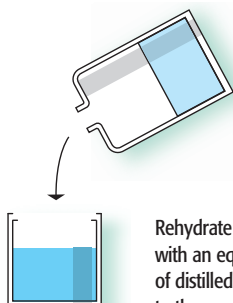
500  $\mu$ l



**VIDAS® SET2**  
Results within 80 min

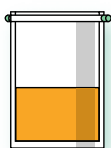
# Dehydrated food

Sample



1 hour / Room temperature

25 g



25 ml extraction buffer

15 min / 18-25°C

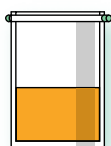
**GENERAL  
PROTOCOL**

# Canned food

Sample

Blend the whole  
canned food  
or a representative  
aliquot  
to obtain a  
homogeneous  
suspension

25 g



25 ml  
extraction  
buffer

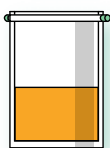
15 min / 18-25°C

**GENERAL  
PROTOCOL**

# Raw meat products, seafood and delicatessen meats

Sample

25 g



+ 25 ml distilled water  
(+ 25 ml if suspension  
is too dense)

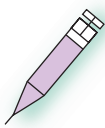
Adjust pH to 4.0  
using 5N HCl

15 – 30 min / 18-25°C



Centrifugation  
15 min at 3000-5000 g  
18-25°C

Supernatant



Syringe containing  
a plug of  
absorbent cotton

Adjust pH  
between 7.5 and 8.0  
using 1N NaOH

500 µl



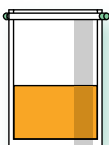
**VIDAS® SET2**

Results within 80 min

# Dairy products without concentration

Dairy product

25 g



40 ml distilled water  
pre-incubated  
at  $38 \pm 2^\circ\text{C}$

30 min /  $18-25^\circ\text{C}$

Dairy product  
(liquid)

25 ml



Adjust pH to  
between 3.5 and 4.0  
using 5N HCl



Centrifugation  
15 min at 3000-5000 g  
 $18-25^\circ\text{C}$

Supernatant

Adjust pH to  
between 7.5 and 8.0  
using 1NaOH



Centrifugation  
15 min at 3000-5000 g  
 $18-25^\circ\text{C}$

Supernatant



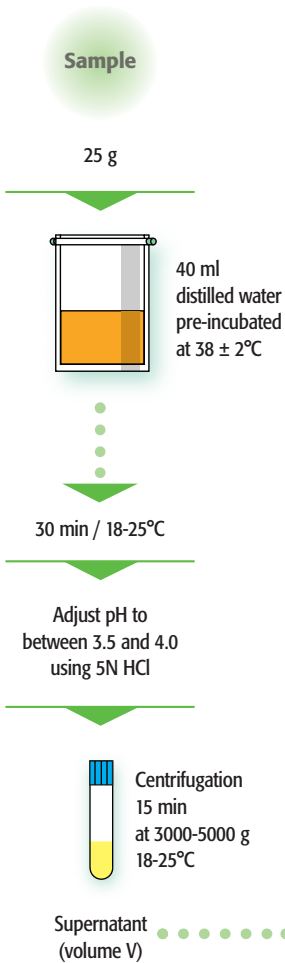
500  $\mu\text{l}$



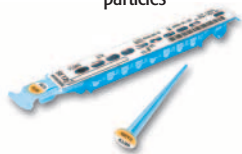
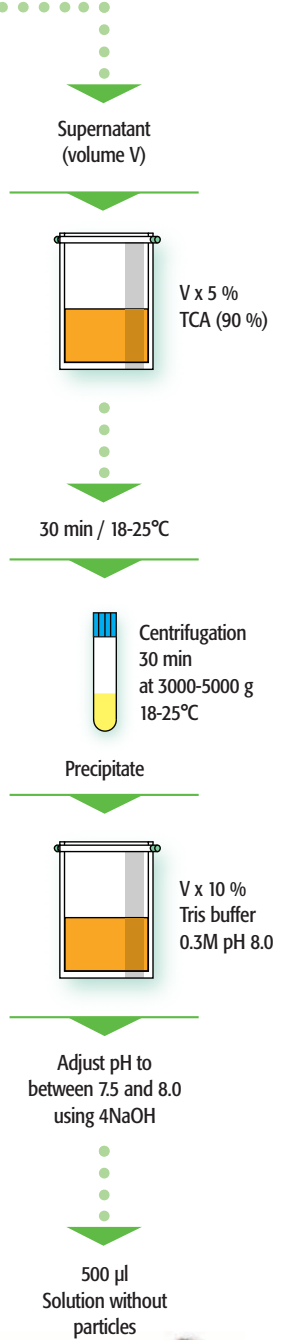
**VIDAS® SET2**  
Results within 80 min

# Trichloroacetic Acid (TCA) Concentration

## 1 Extraction



## 2 Concentration



**VIDAS® SET2**  
Results within 80 min